



Contact Us

P : +86-592-6511408

E : info@workwaysafety.com

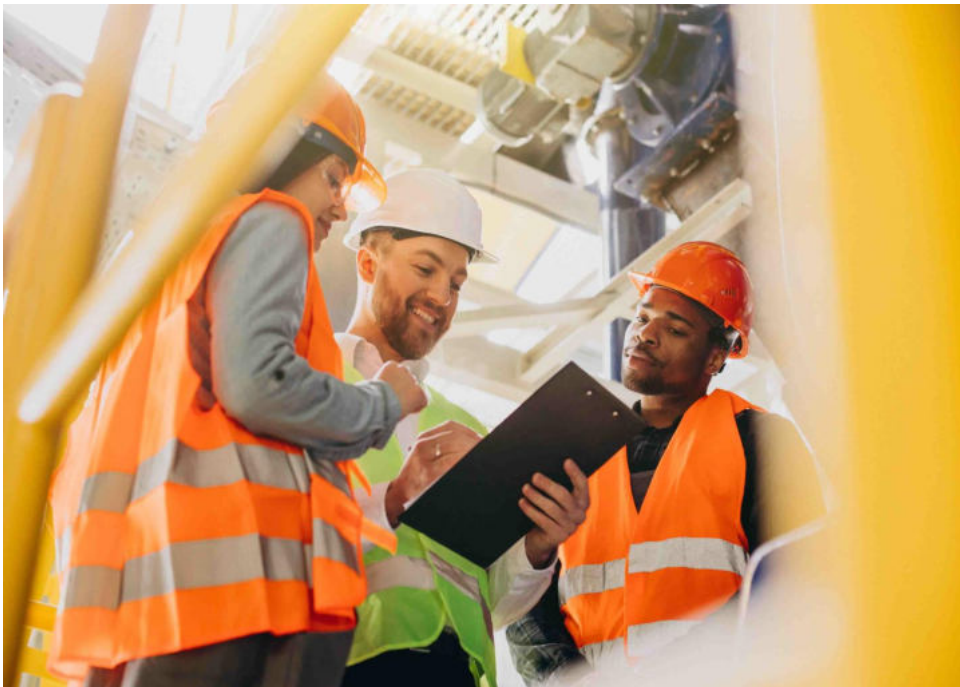
W : www.workwaysafety.com

SAFETY FOOTWEAR

2023-24

FEEL THE

SAFETY & STYLE



WorkWay specializes in the design and production of Safety Footwear and Occupational Footwear. We pride ourselves in supplying a comprehensive range of innovative safety products to protect people in the workplace.

We constantly invest in product development and work closely with specialists, using the latest technologies to develop the best products for work.

Values

Our pillars are the passion for production, continuous research and development in the safety footwear industry. We take pride in supplying a wide range of high quality products that are excellent value for money.

R&D

At WORKWAY, we strongly believe that the task of design is to transform aesthetics into functional technology for safety, ergonomics and comfort at work. Continuous investments in product development, research and state-of-the-art technology allow us to manufacture the most advanced safety products, based on real-time market demands.

Production

Our modern production facilities excel in polyurethane injection, cemented construction and Goodyear welted construction. Different combinations of outsole are produced to meet demands in different workplaces.

QUALITY

We pride ourselves on the quality of our products and are dedicated to ensuring their on-going compliance with all necessary international standards. At WorkWay, we monitor every aspect of the product. Inspection is conducted before, during and after production. Each production unit is constantly monitored by specialists on-site in our production facilities. The stringent quality assurance guarantees the highest quality, reliability and safety for buyers and consumers.



Item no.: SF-487
Upper: Split leather
Lining: Mesh
Toecap: Steel
Midssole: Steel
Sole: PU/PU
Construction: Injection
Standards: EN ISO 20345:2011 S3



Item no.: SF-485
Upper: Split leather
Lining: Mesh
Toecap: Steel
Midssole: Steel
Sole: PU/PU
Construction: Injection
Standards: EN ISO 20345:2011 S3



Item no.: SF-486
Upper: Split leather
Lining: Mesh
Toecap: Steel
Midssole: Steel
Sole: PU/PU
Construction: Injection
Standards: EN ISO 20345:2011 S3



Item no.: SF-484
Upper: Split leather
Lining: Mesh
Toecap: Steel
Midssole: Steel
Sole: PU/PU
Construction: Injection
Standards: EN ISO 20345:2011 S3



Item no.: SF-544
Upper: Crazy horse leather
Lining: Mesh
Toecap: Composite
Midsole: Composite
Sole: PU/Rubber
Construction: Injection
Standards: EN ISO 20345:2011 S3



Item no.: SF-552
Upper: Action Nubuck leather
Lining: Mesh
Toecap: Composite
Midsole: Kevlar
Sole: PU/PU
Construction: Injection
Standards: EN ISO 20345:2011 S3



Item no.: SF-488
Upper: Smooth leather
Lining: Mesh
Toecap: Steel
Midsole: Steel
Sole: PU/PU
Construction: Injection
Standards: EN ISO 20345:2011 S1P



Item no.: SF-552
Upper: Action Nubuck leather
Lining: Mesh
Toecap: Composite
Midsole: Kevlar
Sole: PU/PU
Construction: Injection
Standards: EN ISO 20345:2011 S3



Item no.: SF-489
Upper: Split leather
Lining: Mesh
Toecap: Steel
Midsole: Steel
Sole: PU/PU
Construction: Injection
Standards: EN ISO 20345:2011 S3



Item no.: SF-539G
Upper: Softshell+suede leather
Lining: Fleece+Waterproof membrane
Toecap:
Midsole:
Sole: EVA/Rubber
Construction: Cemented
Standards: EN ISO 20347:2012



Item no.: SF-538
Upper: Action nubuck leather
Lining: Artificial fur
Toecap: Composite
Midsole: Composite
Sole: PU/PU
Construction: Injection
Standards: EN ISO 20345:2011 S3

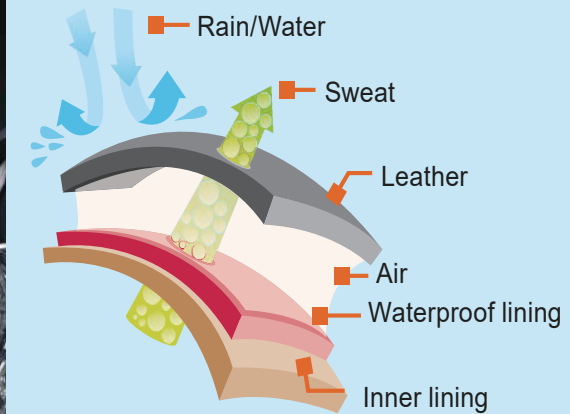


Item no.: SF-539G
Upper: Softshell+suede leather
Lining: Fleece+Waterproof membrane
Toecap:
Midsole:
Sole: EVA/Rubber
Construction: Cemented
Standards: EN ISO 20347:2012





Item no.: SF-540
Upper: Nubuck leather
Lining: Waterproof membrane
Toecap:
Midsole:
Sole: EVA/Rubber
Construction: Cemented
Standards: EN ISO 20347:2012



Item no.: SF-541
Upper: Suede leather
Lining: Waterproof membrane
Toecap:
Midsole:
Sole: PU/PU
Construction: Injection
Standards: EN ISO 20347:2012



Item no.: SF-460
Upper: Softshell+TPU
Lining: Waterproof membrane
Toecap:
Midsole:
Sole: EVA/Rubber
Construction: Cemented
Standards: EN ISO 20347:2012



Item no.: SF-464
Upper: Smooth leather
Lining: Mesh
Toecap: Steel
Midsole:
Sole: PU/PU
Construction: Injection
Standards: EN ISO 20345:2011 SB



 SPINON Closing System

Item no.: SF-578
Upper: Microfibre+PU
Lining: Mesh
Toecap: Composite
Midsole: Kevlar
Sole: PU/PU (with ETPU insert)
Construction: Injection
Standards: EN ISO 20345:2022 S3L SR FO



Item no.: SF-537
Upper: Smooth leather+fabric
Lining: Mesh
Toecap:
Midsole:
Sole: EVA/Rubber
Construction: Cemented
Standards: EN ISO 20347:2012



Item no.: SF-579
Upper: Microfibre+PU
Lining: Mesh
Toecap: Composite
Midsole: Kevlar
Sole: PU/PU (with ETPU insert)
Construction: Injection
Standards: EN ISO 20345:2022 S3L SR FO



Item no.: SF-577
Upper: Microfiber+PU
Lining: Mesh
Toecap: Composite
Midssole: Kevlar
Sole: PU/PU (with ETPU insert)
Construction: Injection
Standards: EN ISO 20345:2022 S1PL SR FO



Item no.: SF-580
Upper: Microfiber+PU
Lining: Mesh
Toecap: Composite
Midssole: Kevlar
Sole: PU/PU (with ETPU insert)
Construction: Injection
Standards: EN ISO 20345:2022 S1PL SR FO



Item no.: SF-580
Upper: Microfiber+PU
Lining: Mesh
Toecap: Composite
Midssole: Kevlar
Sole: PU/PU (with ETPU insert)
Construction: Injection
Standards: EN ISO 20345:2022 S1PL SR FO



Item no.: SF-580
Upper: Microfiber+PU
Lining: Mesh
Toecap: Composite
Midssole: Kevlar
Sole: PU/PU (with ETPU insert)
Construction: Injection
Standards: EN ISO 20345:2022 S1PL SR FO



Item no.: SF-596
Upper: Microfiber+ TPU
Lining: Mesh
Toecap: Composite
Midsole: Kevlar
Sole: PU/PU (with ETPU insert)
Construction: Injection
Standards: EN ISO 20345:2022 S1PL SR FO



Item no.: SF-596
Upper: Microfiber+Fabric
Lining: Mesh
Toecap: Composite
Midsole: Kevlar
Sole: PU/PU (with ETPU insert)
Construction: Injection
Standards: EN ISO 20345:2022 S1PL SR FO



Item no.: SF-582
Upper: Textile+TPU
Lining: Mesh
Toecap: Composite
Midsole: Kevlar
Sole: PU/PU (with ETPU insert)
Construction: Injection
Standards: EN ISO 20345:2022 S1PL SR FO



Item no.: SF-582
Upper: Textile+TPU
Lining: Mesh
Toecap: Composite
Midsole: Kevlar
Sole: PU/PU (with ETPU insert)
Construction: Injection
Standards: EN ISO 20345:2022 S1PL SR FO



Item no.: SF-561
Upper: Fabric+Microfiber+TPU
Lining: Mesh
Toecap: Composite
Midsole: Kevlar
Sole: PU/PU
Construction: Injection
Standards: EN ISO 20345:2011 S1PL SR FO



Item no.: SF-561
Upper: Fabric+Microfiber+TPU
Lining: Mesh
Toecap: Composite
Midsole: Kevlar
Sole: PU/PU
Construction: Injection
Standards: EN ISO 20345:2011 S1PL SR FO



Item no.: SF-566
Upper: Textile+Action Nubuck
Lining: Mesh
Toecap: Composite
Midsole: Kevlar
Sole: PU/PU
Construction: Injection
Standards: EN ISO 20345:2022 S1PL SR FO



Item no.: SF-566
Upper: Textile+Action Nubuck
Lining: Mesh
Toecap: Composite
Midsole: Kevlar
Sole: PU/PU
Construction: Injection
Standards: EN ISO 20345:2022 S1PL SR FO



Item no.: SF-563
Upper: PUTek fabric
Lining: Mesh
Toecap: Composite
Midsole: Kevlar
Sole: PU/PU
Construction: Injection
Standards: EN ISO 20345:2022 S1PL SR FO



Item no.: SF-568
Upper: Fabric
Lining: Mesh
Toecap: Composite
Midsole: Kevlar
Sole: PU/PU
Construction: Injection
Standards: EN ISO 20345:2022 S1PL SR FO



Item no.: SF-564
Upper: PUTek fabric
Lining: Mesh
Toecap: Composite
Midsole: Kevlar
Sole: PU/PU
Construction: Injection
Standards: EN ISO 20345:2022 S1PL SR FO



Item no.: SF-569
Upper: Fabric
Lining: Mesh
Toecap: Composite
Midsole: Kevlar
Sole: PU/PU
Construction: Injection
Standards: EN ISO 20345:2022 S1PL SR FO



Item no.: SF-553
Upper: Mesh+Microfiber
Lining: Mesh
Toecap: Composite
Midsole: Kevlar
Sole: PU/PU
Construction: Injection
Standards: EN ISO 20345:2022 S1PL SR FO



Item no.: SF-555
Upper: Fabric+Microfiber
Lining: Mesh
Toecap: Composite
Midsole: Kevlar
Sole: PU/PU
Construction: Injection
Standards: EN ISO 20345:2022 S1PL SR FO



Item no.: SF-553
Upper: Mesh+Microfiber
Lining: Mesh
Toecap: Composite
Midsole: Kevlar
Sole: PU/PU
Construction: Injection
Standards: EN ISO 20345:2022 S1PL SR FO



Item no.: SF-556
Upper: Fabric+Microfiber
Lining: Mesh
Toecap: Composite
Midsole: Kevlar
Sole: PU/PU
Construction: Injection
Standards: EN ISO 20345:2022 S1PL SR FO



Item no.: SF-557
Upper: Oxford fabric+Microfiber
Lining: Mesh
Toecap: Composite
Midsole: Kevlar
Sole: PU/PU
Construction: Injection
Standards: EN ISO 20345:2022 S1PL SR FO



Item no.: SF-495 BLK/GRY
Upper: Textile
Lining: Mesh
Toecap: Composite
Midsole: Kevlar
Sole: PU/PU
Construction: Injection
Standards: EN ISO 20345:2022 S1PL SR FO



Item no.: SF-558
Upper: Oxford fabric+Microfiber
Lining: Mesh
Toecap: Composite
Midsole: Kevlar
Sole: PU/PU
Construction: Injection
Standards: EN ISO 20345:2022 S1PL SR FO



Item no.: SF-495 BLK/BLU
Upper: Textile
Lining: Mesh
Toecap: Composite
Midsole: Kevlar
Sole: PU/PU
Construction: Injection
Standards: EN ISO 20345:2022 S1PL SR FO



Item no.: SF-548
Upper: Textile
Lining: Mesh
Toecap: Composite
Midsole: Kevlar
Sole: PU/PU
Construction: Injection
Standards: EN ISO 20345:2022 S1PL SR FO



Item no.: SF-576
Upper: Textile
Lining: Mesh
Toecap: Composite
Midsole: Kevlar
Sole: PU/PU
Construction: Injection
Standards: EN ISO 20345:2022 S1PL SR FO



Item no.: SF-576
Upper: Textile
Lining: Mesh
Toecap: Composite
Midsole: Kevlar
Sole: PU/PU
Construction: Injection
Standards: EN ISO 20345:2022 S1PL SR FO



Item no.: SF-576
Upper: Textile
Lining: Mesh
Toecap: Composite
Midsole: Kevlar
Sole: PU/PU
Construction: Injection
Standards: EN ISO 20345:2022 S1PL SR FO



Item no.: SF-565+TPU
Upper: Textile
Lining: Mesh
Toecap: Composite
Midsole: Kevlar
Sole: PU/PU
Construction: Injection
Standards: EN ISO 20345:2022 S1PL SR FO



Item no.: SF-570
Upper: Fabric+Microfiber+TPU
Lining: Mesh
Toecap: Composite
Midsole: Kevlar
Sole: EVA/Rubber
Construction: Cemented
Standards: EN ISO 20345:2022 S1PL SR FO



Item no.: SF-584
Upper: Textile+microfiber
Lining: Mesh
Toecap: Composite
Midsole: Kevlar
Sole: PU/PU
Construction: Injection
Standards: EN ISO 20345:2011 S1P



Item no.: SF-571
Upper: Fabric+Microfiber+TPU
Lining: Mesh
Toecap: Composite
Midsole: Kevlar
Sole: EVA/Rubber
Construction: Cemented
Standards: EN ISO 20345:2022 S1PL SR FO



Item no.: SF-572 Grey
Upper: Textile+TPU
Lining: Mesh
Toecap: Composite
Midsole: Kevlar
Sole: EVA/Rubber
Construction: Cemented
Standards: EN ISO 20345:2022 S1PL SR FO



Item no.: SF-573 Orange
Upper: Textile+TPU
Lining: Mesh
Toecap: Composite
Midsole: Kevlar
Sole: EVA/Rubber
Construction: Cemented
Standards: EN ISO 20345:2022 S1PL SR FO



Item no.: SF-572 Grey
Upper: Textile+TPU
Lining: Mesh
Toecap: Composite
Midsole: Kevlar
Sole: EVA/Rubber
Construction: Cemented
Standards: EN ISO 20345:2022 S1PL SR FO



Item no.: SF-573 Grey
Upper: Textile+TPU
Lining: Mesh
Toecap: Composite
Midsole: Kevlar
Sole: EVA/Rubber
Construction: Cemented
Standards: EN ISO 20345:2022 S1PL SR FO



Item no.: SF-575
Upper: Textile+TPU
Lining: Mesh
Toecap: Composite
Midsole: Kevlar
Sole: EVA/Rubber
Construction: Cemented
Standards: EN ISO 20345:2022 S1PL SR FO



Item no.: SF-597
Upper: Suede leather +Action nubuck
Lining: Mesh
Toecap: Composite
Midsole: Kevlar
Sole: EVA/Rubber
Construction: Cemented
Standards: EN ISO 20345:2022 S1PL SR FO



Item no.: SF-574
Upper: Textile+TPU
Lining: Mesh
Toecap: Composite
Midsole: Kevlar
Sole: EVA/Rubber
Construction: Cemented
Standards: EN ISO 20345:2022 S1PL SR FO



Item no.: SF-598
Upper: Suede leather +Action nubuck
Lining: Mesh
Toecap: Composite
Midsole: Kevlar
Sole: EVA/Rubber
Construction: Cemented
Standards: EN ISO 20345:2022 S1PL SR FO



Item no.: SF-545
Upper: Action nubuck leather
Lining: Mesh
Toecap: Steel
Midsole: Steel
Sole: EVA/Rubber
Construction: Cemented
Standards: EN ISO 20345:2011 S1P



Item no.: SF-497
Upper: Suede leather+fabric
Lining: Mesh
Toecap: Steel
Midsole: Kevlar
Sole: EVA/Rubber
Construction: Cemented
Standards: EN ISO 20345:2022 S1PL SR FO



Item no.: SF-526
Upper: Action nubuck leather
Lining: Mesh
Toecap: Steel
Midsole: Steel
Sole: EVA/Rubber
Construction: Cemented
Standards: EN ISO 20345:2011 S1P



Item no.: SF-599
Upper: Microfiber
Lining: Mesh
Toecap: Composite
Midsole: Kevlar
Sole: EVA/Rubber
Construction: Cemented
Standards: EN ISO 20345:2022 S1PL SR FO



Item no.: SF-531
Upper: Suede leather+mesh
Lining: Mesh
Toecap: Composite
Midsole: Kevlar
Sole: EVA/Rubber
Construction: Cemented
Standards: EN ISO 20345:2022 S1PL SR FO



Item no.: SF-546
Upper: Action leather+PU
Lining: Mesh
Toecap: Composite
Midsole: Kevlar
Sole: EVA/Rubber
Construction: Cemented
Standards: EN ISO 20345:2022 S1PL SR FO



Item no.: SF-546
Upper: Suede leather
Lining: Mesh
Toecap: Composite
Midsole: Kevlar
Sole: EVA/Rubber
Construction: Cemented
Standards: EN ISO 20345:2022 S1PL SR FO



Item no.: SF-600
Upper: Microfiber
Lining: Mesh
Toecap: Composite
Midsole: Kevlar
Sole: EVA/Rubber
Construction: Cemented
Standards: EN ISO 20345:2022 S1PL SR FO



Item no.: SF-532
Upper: Microfiber+Mesh
Lining: Mesh
Toecap: Composite
Midsole: Kevlar
Sole: EVA/Rubber
Construction: Cemented
Standards: EN ISO 20345:2022 S1PL SR FO



Press for locking.

Pull for opening



Turn for tightening

•**PERFECT FIT** – Individual comfort without pressure marks thanks to customized cable guides, which enable an equal pressure distribution.

•**QUICK** – The locking system enables you to put on and take off the shoe quickly and easily.



Item no.: SF-589
Upper: Fabric mesh+PU
Lining: Mesh
Toecap: Composite
Midsole: Kevlar
Sole: EVA/Rubber
Construction: Cemented
Standards: EN ISO 20345:2022 S1PL SR FO



Item no.: SF-497
Upper: KPU
Lining: Mesh
Toecap: Composite
Midsole: Kevlar
Sole: EVA/Rubber
Construction: Cemented
Standards: EN ISO 20345:2022 S1PL SR FO



Item no.: SF-528
Upper: Suede leather+oxford fabric
Lining: Mesh
Toecap: Composite
Midsole: Kevalr
Sole: EVA/Rubber
Construction: Cemented
Standards: EN ISO 20345:2011 S1P



Item no.: SF-593
Upper: TPU+Mesh
Lining: Mesh
Toecap: Composite
Midsole: Kevalr
Sole: EVA/Rubber
Construction: Cemented
Standards: EN ISO 20345:2022 S1PL



Item no.: SF-527
Upper: Suede leather+oxford fabric
Lining: Mesh
Toecap: Composite
Midsole: Kevalr
Sole: EVA/Rubber
Construction: Cemented
Standards: EN ISO 20345:2011 S1P



Item no.: SF-594
Upper: TPU+Mesh
Lining: Mesh
Toecap: Composite
Midsole: Kevalr
Sole: EVA/Rubber
Construction: Cemented
Standards: EN ISO 20345:2022 S1PL



Item no.: SF-591
Upper: TPU+Mesh
Lining: Mesh
Toecap: Composite
Midsole: Kevalr
Sole: EVA/Rubber
Construction: Cemented
Standards: EN ISO 20345:2022 S1PL



Item no.: SF-592
Upper: TPU+Mesh
Lining: Mesh
Toecap: Composite
Midsole: Kevalr
Sole: EVA/Rubber
Construction: Cemented
Standards: EN ISO 20345:2022 S1PL



Light as Air,
Tough as Steel

